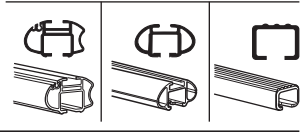
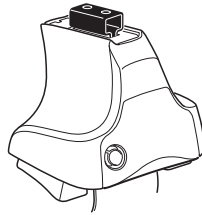


Kit 1181

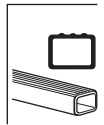
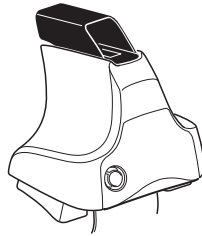
SUZUKI Grand Vitara, 5-dr SUV, 99-04

CHEVROLET Tracker, 5-dr SUV, 99-04

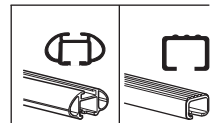
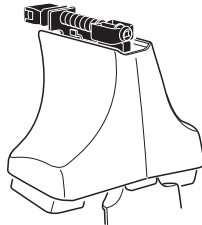
480R
754



480



750



THULE[®]
SWEDEN

ISO 11154-E

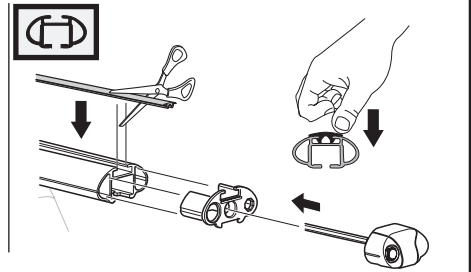
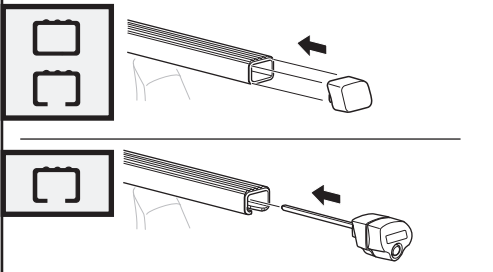
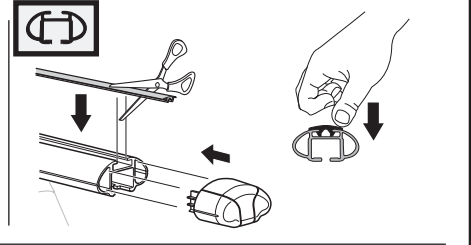
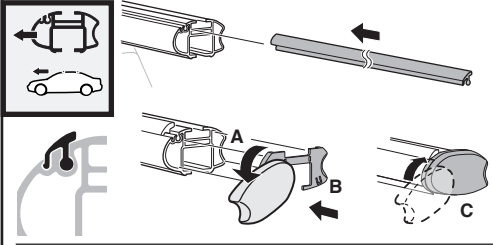
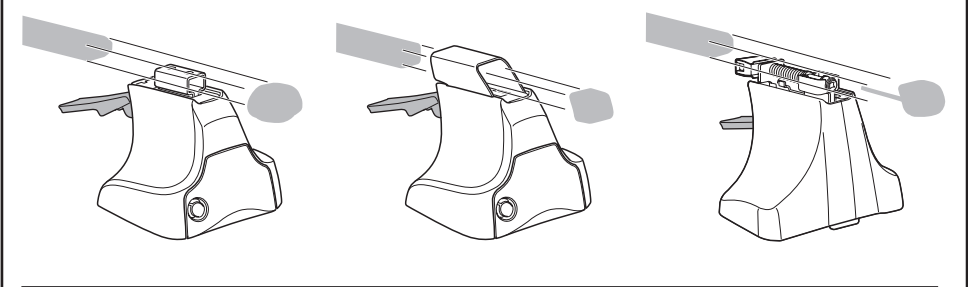
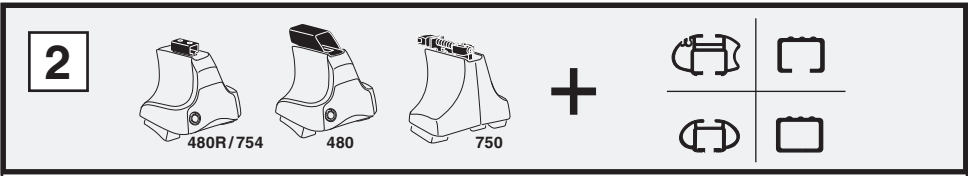
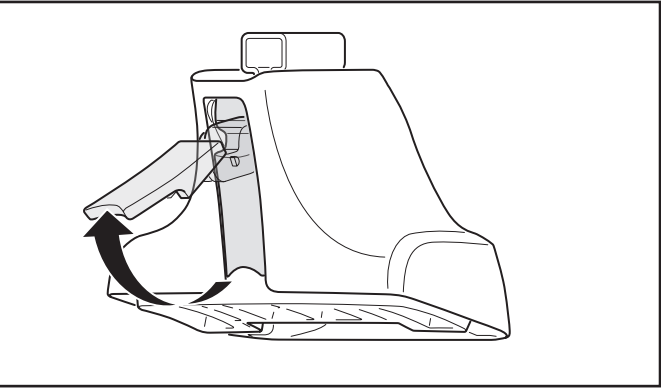
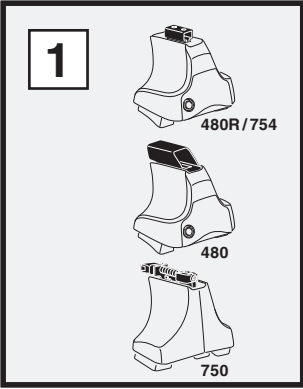
x2 x2 x2 x4	x2	x2 x2 x4 x4	x2 x2	x2

308 x 4

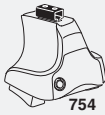
04 x 4

x 1

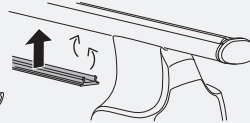
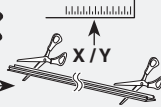
Kit



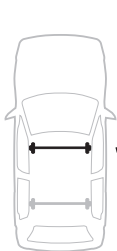
3



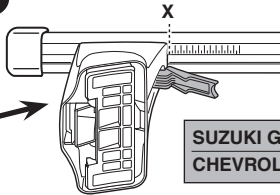
754



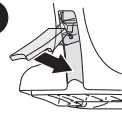
750



1



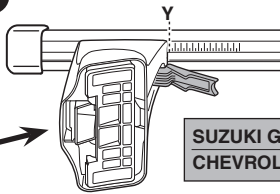
2



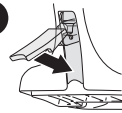
	X
SUZUKI Grand Vitara, 5-dr SUV, 99-04	32,5
CHEVROLET Tracker, 5-dr SUV, 99-04	32,5



1



2



	Y
SUZUKI Grand Vitara, 5-dr SUV, 99-04	30,5
CHEVROLET Tracker, 5-dr SUV, 99-04	30,5

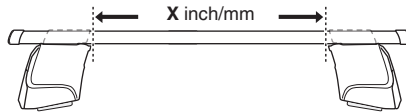


480R

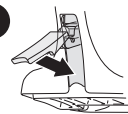


480

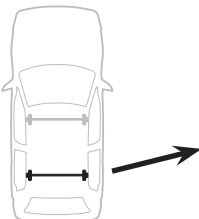
1



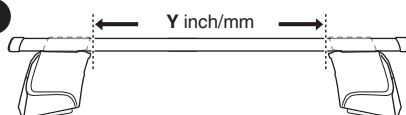
2



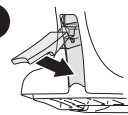
	X inch	X mm
SUZUKI Grand Vitara, 5-dr SUV, 99-04	38 ³ / ₈ "	976 mm
CHEVROLET Tracker, 5-dr SUV, 99-04	38 ³ / ₈ "	976 mm



1



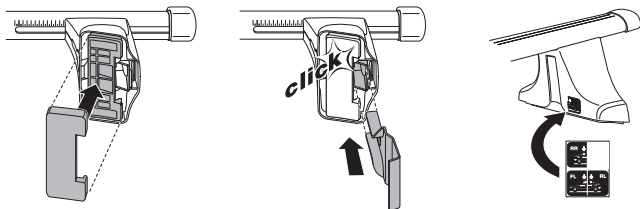
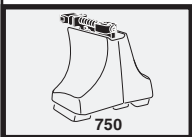
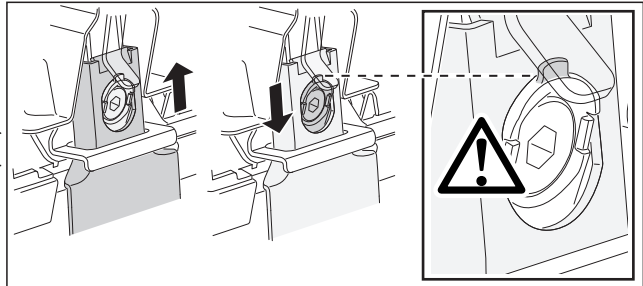
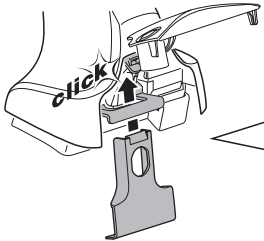
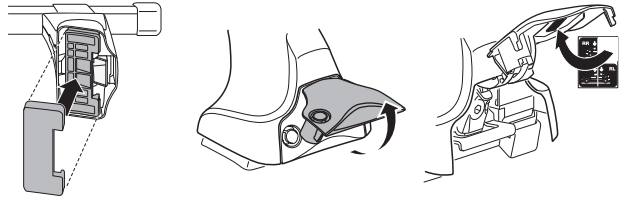
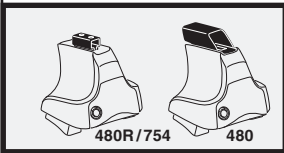
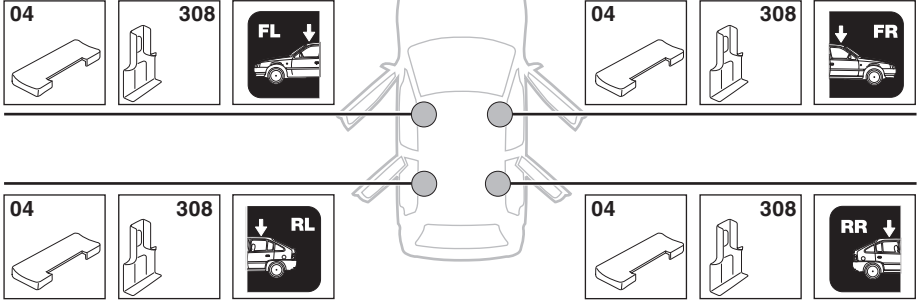
2



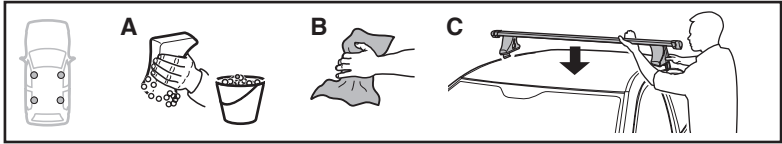
	Y inch	Y mm
SUZUKI Grand Vitara, 5-dr SUV, 99-04	37 ⁵ / ₈ "	956 mm
CHEVROLET Tracker, 5-dr SUV, 99-04	37 ⁵ / ₈ "	956 mm

4

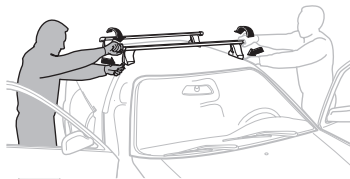
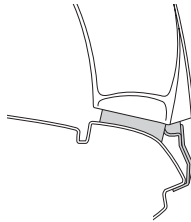
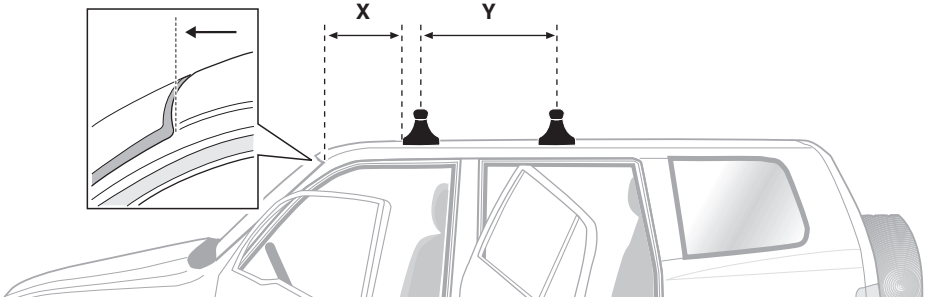
SUZUKI Grand Vitara, 5-dr SUV, 99-04
CHEVROLET Tracker, 5-dr SUV, 99-04



5



	X mm	Y mm	X inch	Y inch
SUZUKI Grand Vitara, 5-dr SUV, 99-04	310 mm	750 mm	12 1/4"	29 1/2"
CHEVROLET Tracker, 5-dr SUV, 99-04	310 mm	750 mm	12 1/4"	29 1/2"



GB/US Tighten alternately

D Die Schrauben abwechselnd anziehen

F Serrer alternativement chaque côté

NL Afwisselend aan de linker- en de rechterkant aandraaien

I Alternare il serraggio delle viti

E Apretar alternativamente

PT Aperte alternadamente

S Dra åt växelvis

FIN Kierrä vuorotellen

EST Pinguldage vaheldumisi

LAT Pielvelciet pamīšus

LIT Užsukinėkite pakaitomis

PL Śruby dokręcaj naprzemiennie

RU Затягивайте попеременно

CZ Pokręťta bagažníka dokręcaj dokręcaj naprzemiennie.

SK Doťahujte striedavo

SLO Privijajte izmenično.

HR Naizmjenično zategnite

HU Egymástól függetlenül szorítandó

GR Σφιγγετε εναλλάξ

TR Dönüşümlü sıkın

中文 交替拧紧

한국어 번갈아 가며 조이십시오.

日本語 交互に締め付けてください。

ไทย ชั้้นโน้บแบบสลับ

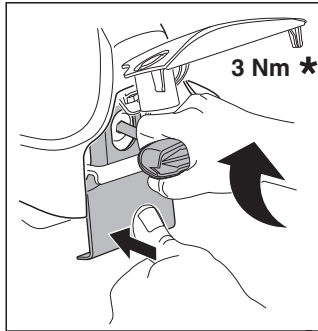
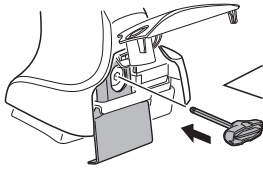
6



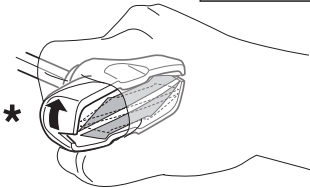
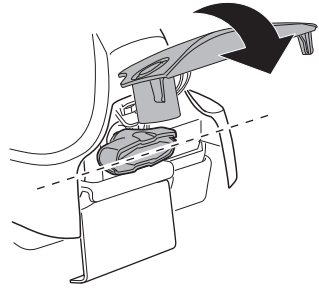
480R/754



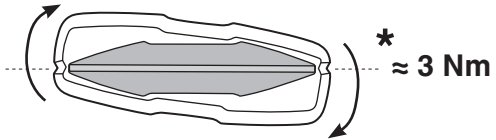
480



3 Nm *



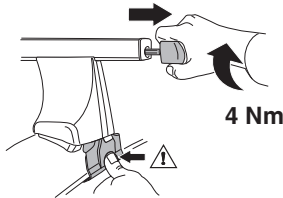
*



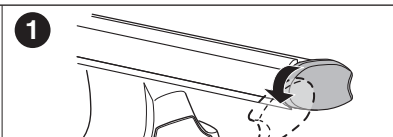
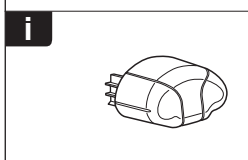
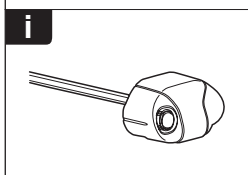
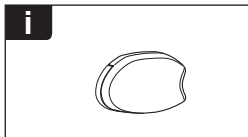
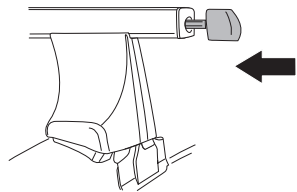
* ≈ 3 Nm



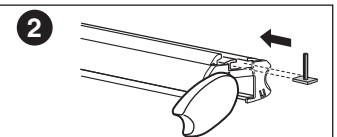
750



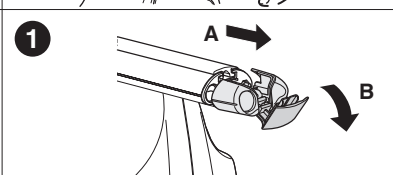
4 Nm



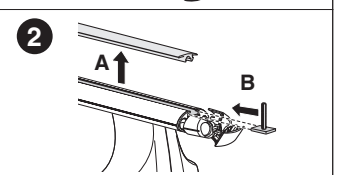
1



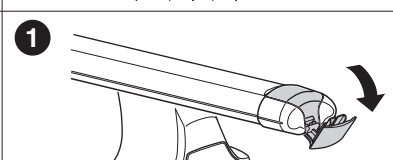
2



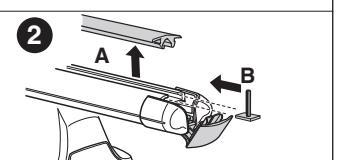
1



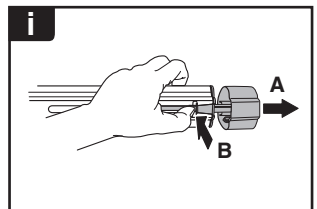
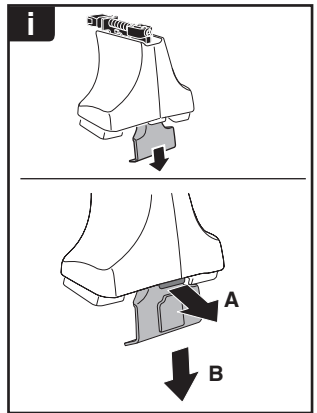
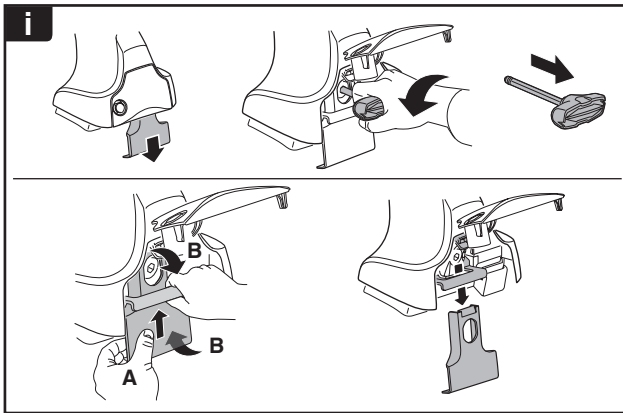
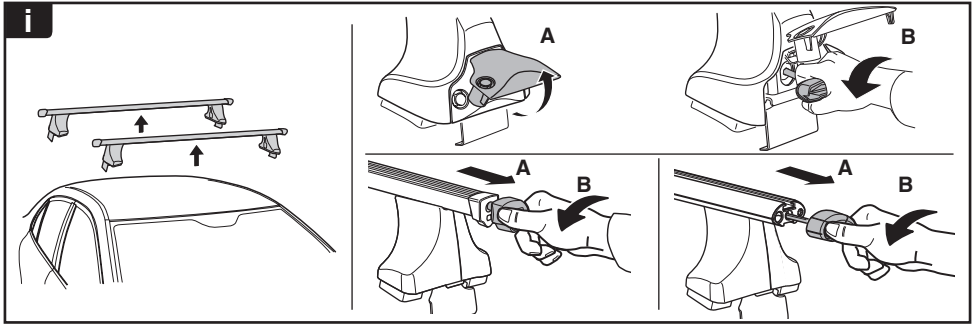
2



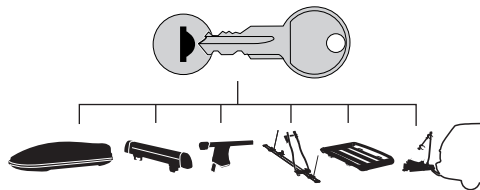
1



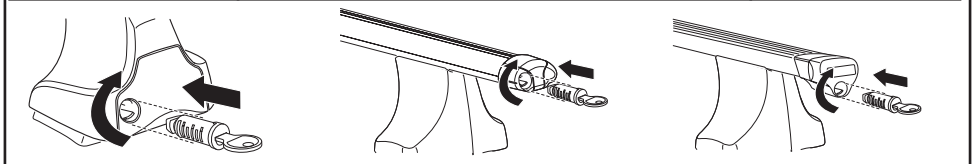
2



THULE
SWEDEN
**ONE
KEY
SYSTEM**



- 544 (x4)
- 596 (x6)
- 588 (x8)
- NA 510 (x10)
- EUR 452 (x12)
- ASIA 452 (x12)



WW ▶ Thule Sweden AB, Box 69, 330 33 Hillerstorp, SWEDEN
NA ▶ Thule Inc., 42 Silvermine Road, Seymour, Connecticut 06483, USA

info@thule.com
customer.service@thule.com

www.thule.com