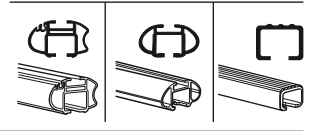
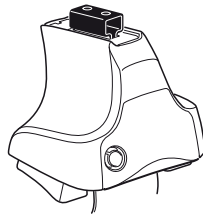


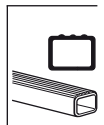
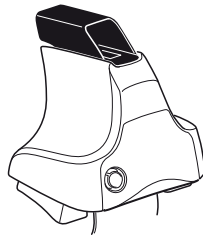
Kit 1173

MITSUBISHI Pajero Pinin, 3-dr SUV, 98–
MITSUBISHI Pajero Pinin, 5-dr SUV, 98–
MITSUBISHI Pajero IO, 3-dr SUV, 98–
MITSUBISHI Pajero IO, 5-dr SUV, 98–
MITSUBISHI Pajero TR4, 3-dr SUV, 02–
MITSUBISHI Pajero TR4, 5-dr SUV, 02–

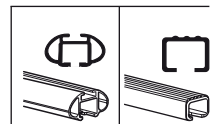
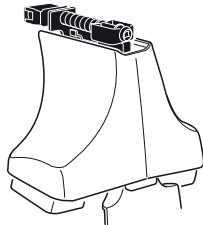
480R
754



480



750



xx kg / xx lbs + 7 kg / 15,4 lbs = Max. 50 kg / Max. 110 lbs
 3 kg / 6,6 lbs

80 km/h 130 km/h
 50 Mph 80 Mph
 40 km/h 25 Mph
 km/h Mph

+ Kit XXXX

x1 x4 x4 x4 x4
 480R/754

x1 x4 x4 x4
 480

x1 x4 x4
 750

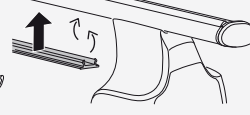
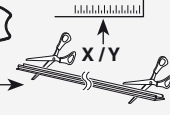
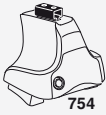
x2	x2	x2	x2	x2
x2		x2	x2	
x2		x4	x2	
x4		x4		

328 x 4 03 x 2
 04 x 2 x 1

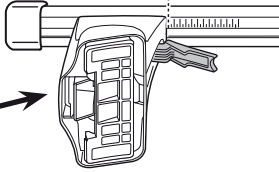
Kit



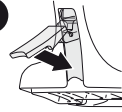
3



1

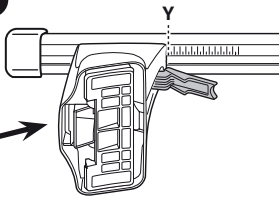


2



	X
MITSUBISHI Pajero Pinin, 3-dr SUV, 98-	38
MITSUBISHI Pajero Pinin, 5-dr SUV, 98-	38
MITSUBISHI Pajero IO, 3-dr SUV, 98-	38
MITSUBISHI Pajero IO, 5-dr SUV, 98-	38
MITSUBISHI Pajero TR4, 3-dr SUV, 02-	38
MITSUBISHI Pajero TR4, 5-dr SUV, 02-	38

1



2



	Y
MITSUBISHI Pajero Pinin, 3-dr SUV, 98-	33
MITSUBISHI Pajero Pinin, 5-dr SUV, 98-	33
MITSUBISHI Pajero IO, 3-dr SUV, 98-	33
MITSUBISHI Pajero IO, 5-dr SUV, 98-	33
MITSUBISHI Pajero TR4, 3-dr SUV, 02-	33
MITSUBISHI Pajero TR4, 5-dr SUV, 02-	33

3

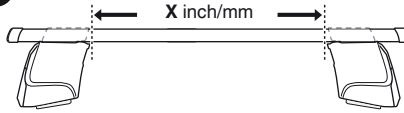


480R

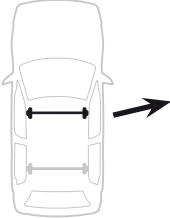
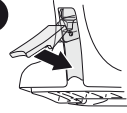


480

1

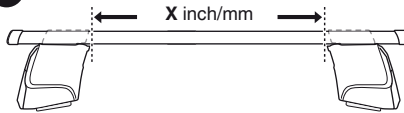


2

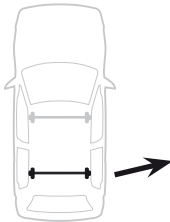
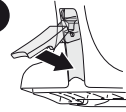


	X inch	X mm
MITSUBISHI Pajero Pinin, 3-dr SUV, 98-	40 ⁵ / ₈ "	1031
MITSUBISHI Pajero Pinin, 5-dr SUV, 98-	40 ⁵ / ₈ "	1031
MITSUBISHI Pajero IO, 3-dr SUV, 98-	40 ⁵ / ₈ "	1031
MITSUBISHI Pajero IO, 5-dr SUV, 98-	40 ⁵ / ₈ "	1031
MITSUBISHI Pajero TR4, 3-dr SUV, 02-	40 ⁵ / ₈ "	1031
MITSUBISHI Pajero TR4, 5-dr SUV, 02-	40 ⁵ / ₈ "	1031

1



2

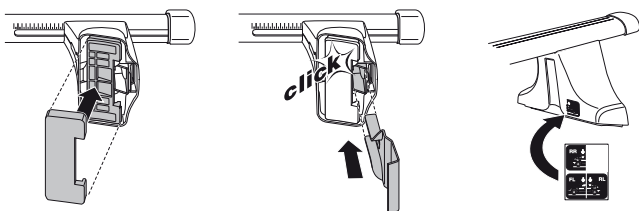
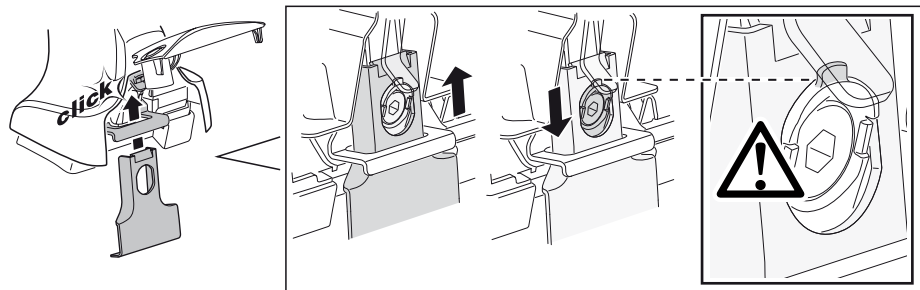
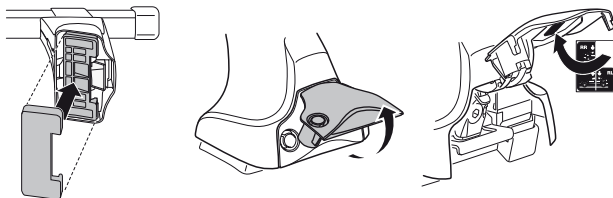
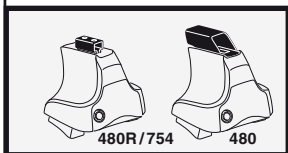
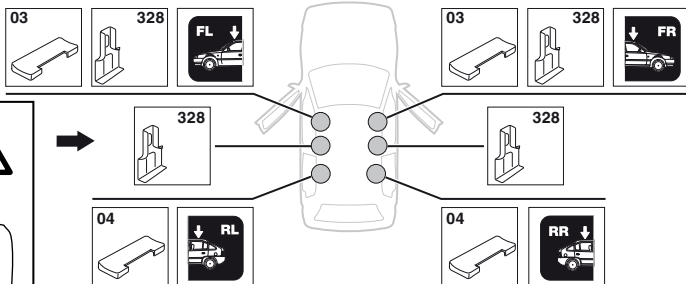
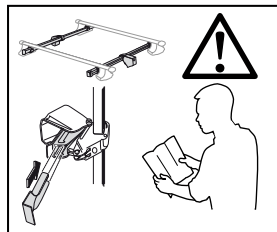


	Y inch	Y mm
MITSUBISHI Pajero Pinin, 3-dr SUV, 98-	38 ⁵ / ₈ "	981
MITSUBISHI Pajero Pinin, 5-dr SUV, 98-	38 ⁵ / ₈ "	981
MITSUBISHI Pajero IO, 3-dr SUV, 98-	38 ⁵ / ₈ "	981
MITSUBISHI Pajero IO, 5-dr SUV, 98-	38 ⁵ / ₈ "	981
MITSUBISHI Pajero TR4, 3-dr SUV, 02-	38 ⁵ / ₈ "	981
MITSUBISHI Pajero TR4, 5-dr SUV, 02-	38 ⁵ / ₈ "	981

4

MITSUBISHI Pajero Pinin, 3-dr SUV, 98–
 MITSUBISHI Pajero IO, 3-dr SUV, 98–
 MITSUBISHI Pajero TR4, 3-dr SUV, 02–

SRA

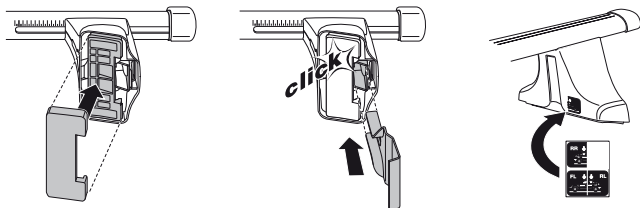
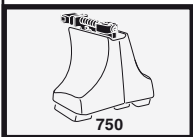
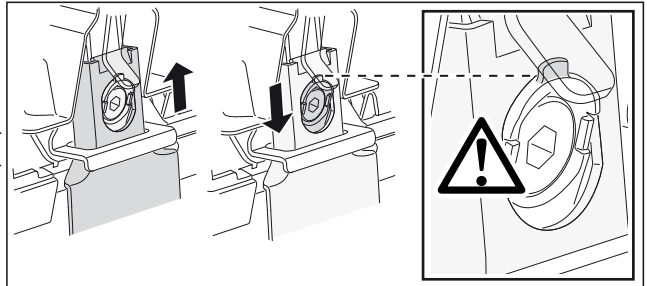
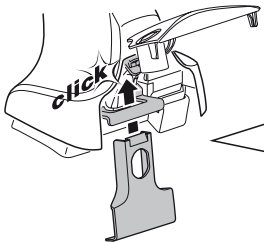
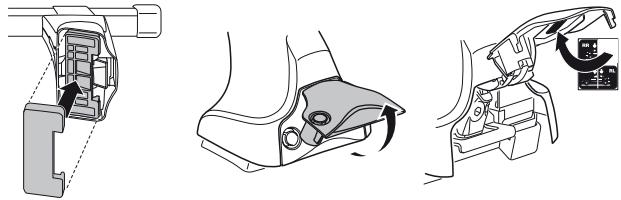
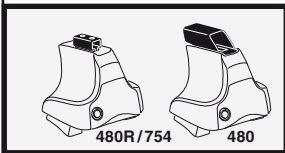


4

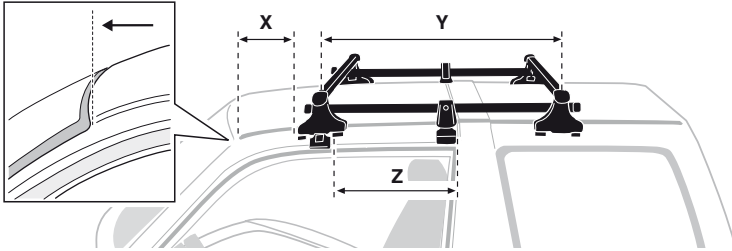
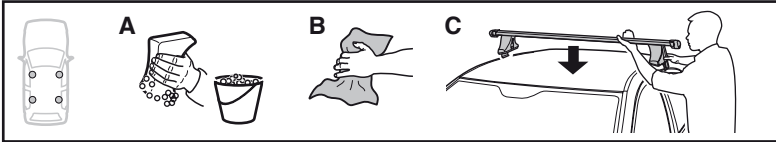
MITSUBISHI Pajero Pinin, 5-dr SUV, 98-

MITSUBISHI Pajero IO, 5-dr SUV, 98-

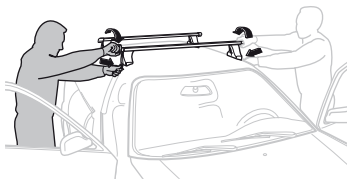
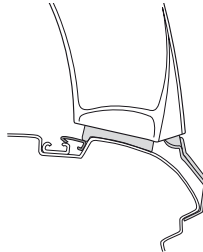
MITSUBISHI Pajero TR4, 5-dr SUV, 02-



5



	X mm	Y mm	Z mm	X inch	Y inch	Z inch
MITSUBISHI Pajero Pinin, 3-dr SUV, 98-	250 mm	700 mm	355 mm	9 7/8"	27 1/2"	14"
MITSUBISHI Pajero IO, 3-dr SUV, 98-	250 mm	700 mm	355 mm	9 7/8"	27 1/2"	14"
MITSUBISHI Pajero TR4, 3-dr SUV, 02-	250 mm	700 mm	355 mm	9 7/8"	27 1/2"	14"



GB/US Tighten alternately

D Die Schrauben abwechselnd anziehen

F Serrer alternativement chaque côté

NL Afwisselend aan de linker- en de rechterkant aandraaien

I Alternare il serraggio delle viti

E Apretar alternativamente

PT Aperte alternadamente

S Dra åt växelvis

FIN Kierrä vuorotellen

EST Pinguldage vaheldumisi

LAT Pievelciet pamišus

LIT Užsukinėkite pakaitomis

PL Śruby dokręcaj naprzemiennie

RU Затягивайте попеременно

CZ Pokręťta bagažníka dokręcaj dokręcaj naprzemiennie.

SK Doťahujte striedavo

SLO Privijajte izmenično.

HR Naizmjenično zategnite

HU Egymástól függetlenül szorítandó

GR Σφιγγετε εναλλάξ

TR Dönüşümlü sıkın

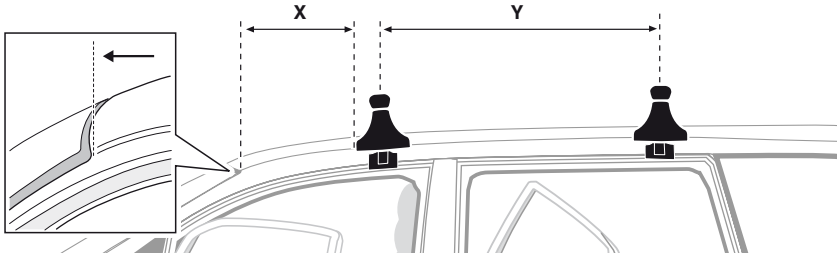
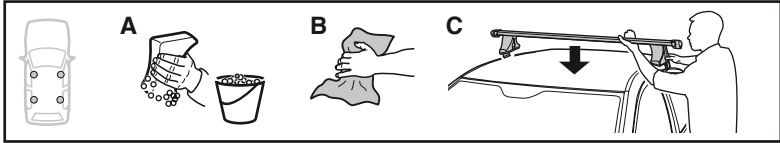
中文 交替拧紧

한국어 번갈아 가며 조이십시오.

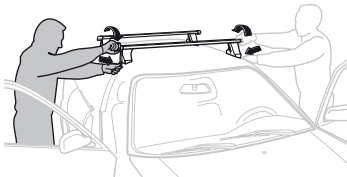
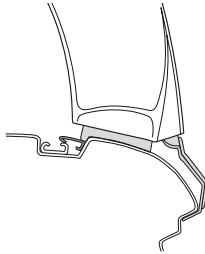
日本語 交互に締め付けてください。

ไทย ขันในแบบสลับ

5



	X mm	Y mm	X inch	Y inch
MITSUBISHI Pajero Pinin, 5-dr SUV, 98-	250 mm	700 mm	9 ⁷ / ₈ "	27 ¹ / ₂ "
MITSUBISHI Pajero IO, 5-dr SUV, 98-	250 mm	700 mm	9 ⁷ / ₈ "	27 ¹ / ₂ "
MITSUBISHI Pajero TR4, 5-dr SUV, 02-	250 mm	700 mm	9 ⁷ / ₈ "	27 ¹ / ₂ "



GB/US Tighten alternately

D Die Schrauben abwechselnd anziehen

F Serrer alternativement chaque côté

NL Afwisselend aan de linker- en de rechterkant aandraaien

I Alternare il serraggio delle viti

E Apretar alternativamente

PT Aperte alternadamente

S Dra åt växelvis

FIN Kierrä vuorotellen

EST Pinguldage vaheldumisi

LAT Pielvelciet pamišus

LIT Užsukinėkite pakaitomis

PL Śruby dokręcaj naprzemiennie

RU Затягивайте попеременно

CZ Pokręťta багаžnika dokręcaj dokręcaj naprzemiennie.

SK Doťahujte striedavo

SLO Privijajte izmenično.

HR Naizmjenično zategnite

HU Egymástól függetlenül szorítandó

GR Σφιγγετε εναλλάξ

TR Dönüşümlü sıkın

中文 交替拧紧

한국어 번갈아 가며 조이십시오.

日本語 交互に締め付けてください。

ไทย ชั้้นในแบบสลับ

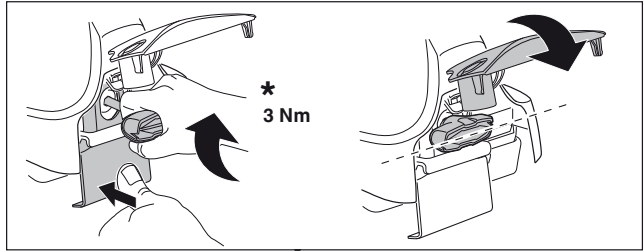
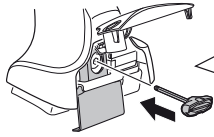
6



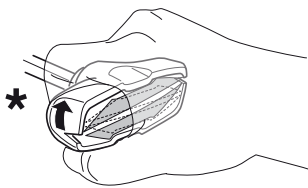
480R/754



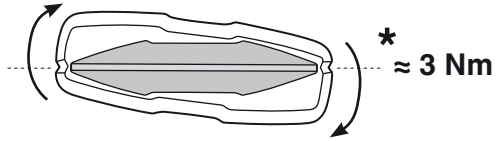
480



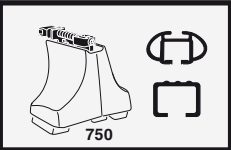
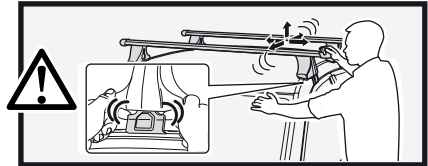
*
3 Nm



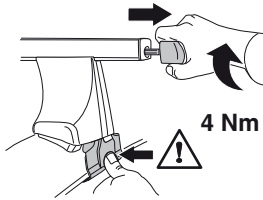
*



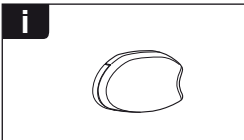
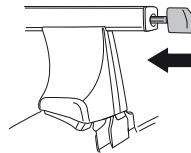
*
≈ 3 Nm



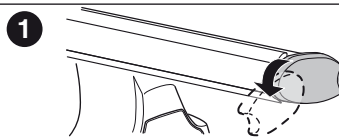
750



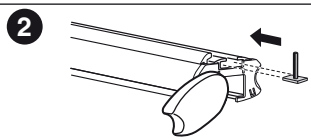
4 Nm



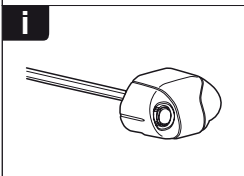
i



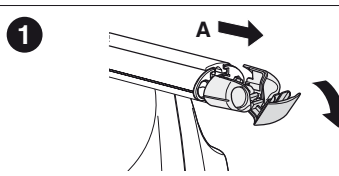
1



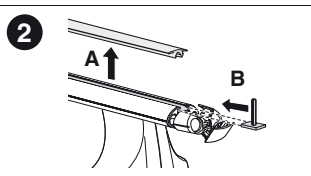
2



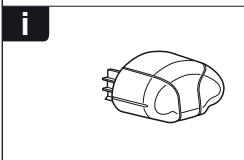
i



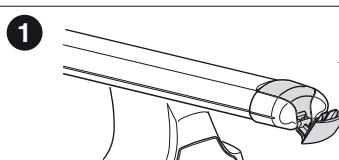
1



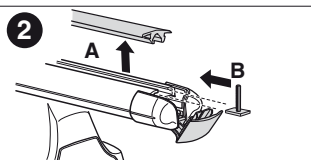
2



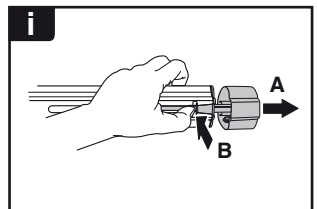
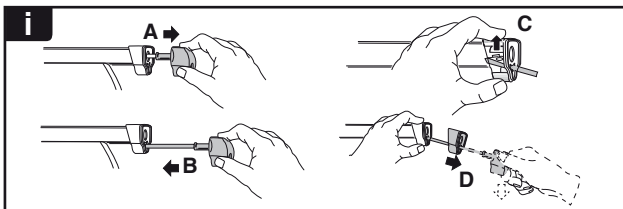
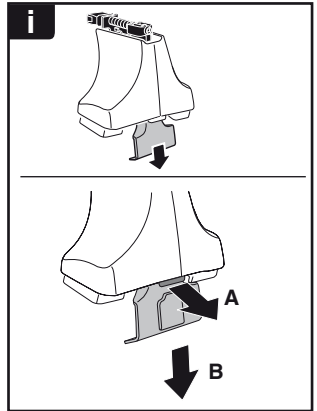
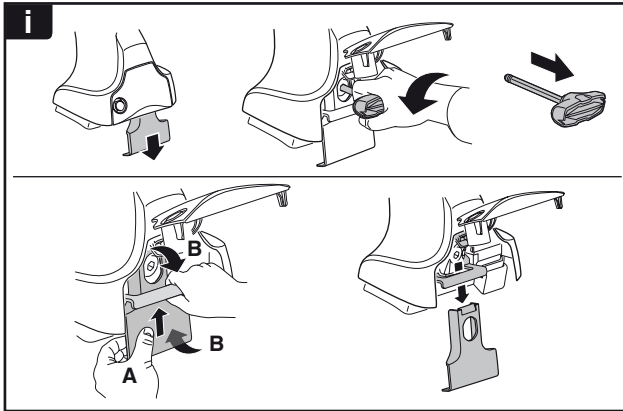
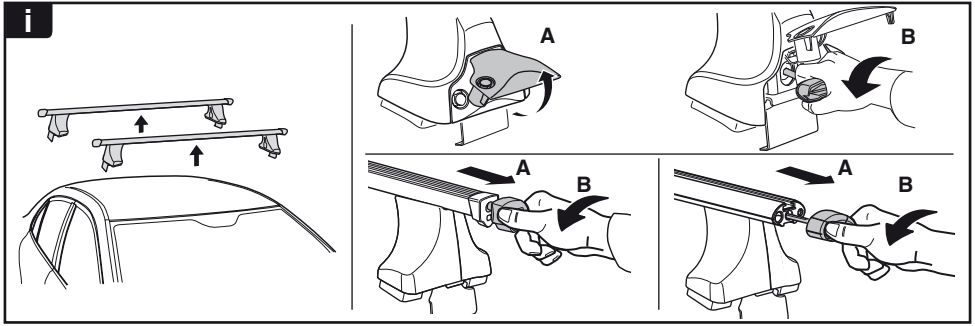
i



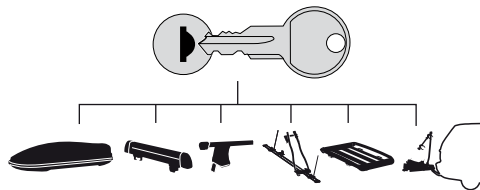
1



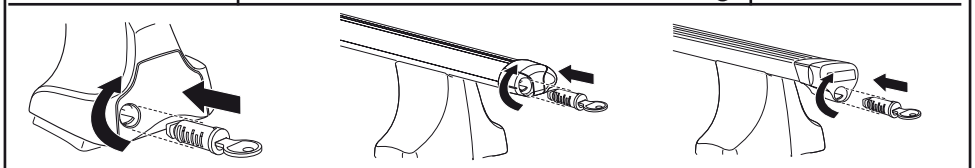
2



THULE
SWEDEN
**ONE
KEY
SYSTEM**



- 544 (x4)
- 596 (x6)
- 588 (x8)
- NA 510 (x10)
- EUR 452 (x12)
- ASIA



WW ▶ Thule Sweden AB, Box 69, 330 33 Hillerstorp, SWEDEN
 NA ▶ Thule Inc., 42 Silvermine Road, Seymour, Connecticut 06483, USA

info@thule.com
 customer.service@thule.com

www.thule.com